

JOLIDON ROMANIA, 400139 Cluj-Napoca, str. Tabacarilor nr. 1, Romania, tel.: 0040 264 419391; fax: 0040 264 447869, e-mail: jol@jolidon.ro,
JOLIDON FRANCE S.a.r.l., Lyon, Parc d'Affaires Roosevelt, Rue des Frères Lumière, 69120 Vaulx en Velin, Rhone,
tel: 0033(0)662830102, e-mail: jolidonlyon@wanadoo.fr, jolidonfrance@orange.fr,
JOLIDON ITALIA SRL, Via Cavour 107/G, 20056 Trezzo sull'Adda (MI), tel: 0039 0290962166, fax: 0039 0290929636, email: jolidon@jolidon.it,
JOLIDON POLAND Sp.z.o.o. Ul. Zbyszynska 4, 91-342 Lodz, Poland, tel: 0048 42 227 0774, fax: 0048 42 213 1917

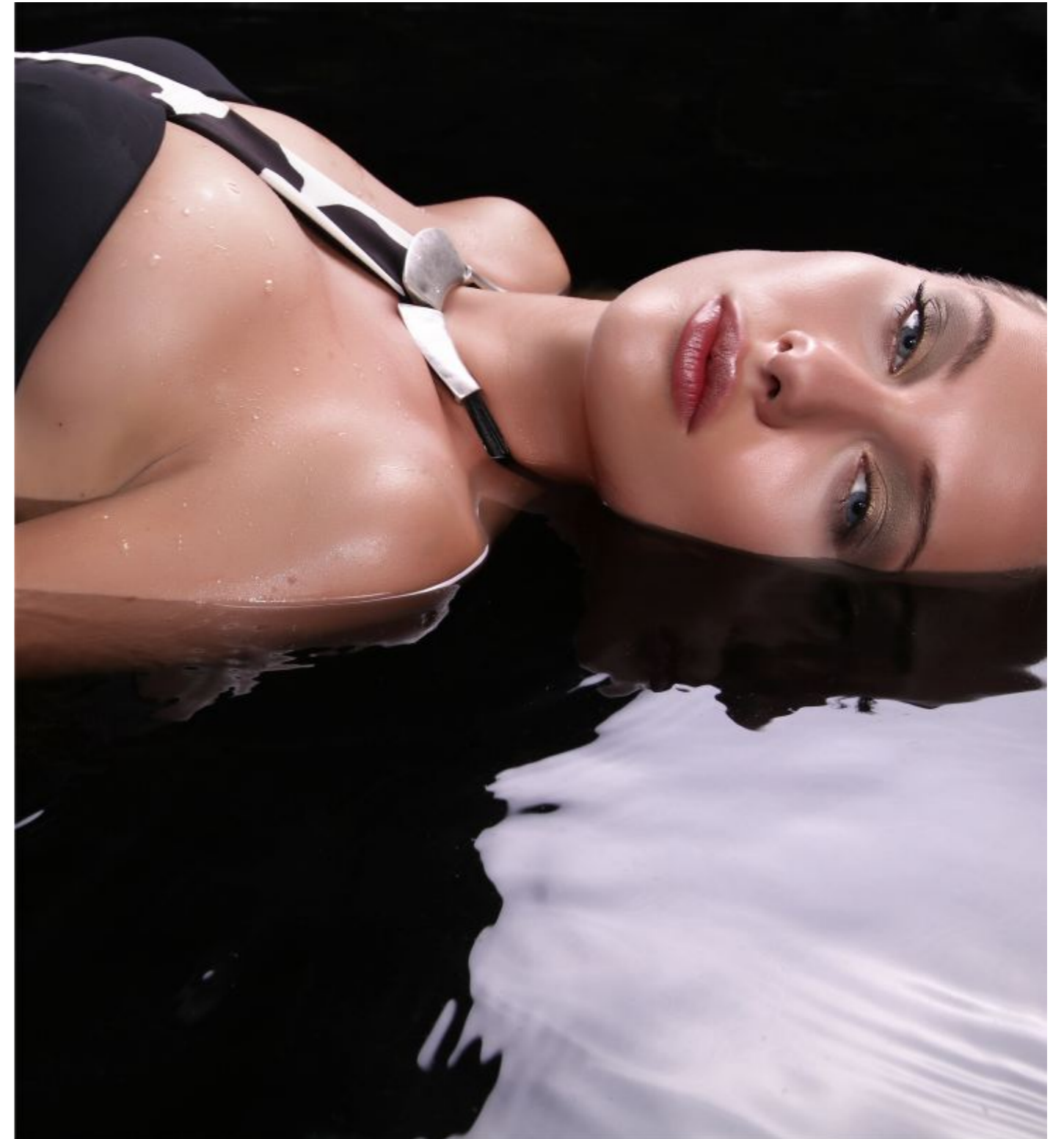
PRELUDE

MILANO

PRELUDE

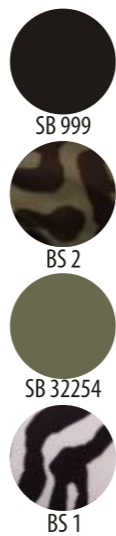
MILANO

AQUA 2017



*Water, ever the same and ever changing, magic, transient, elusive.
A tale of enchanted fluidity of styles.*

AQUA 2017



YFQ 81
Kaftan
one size

Kasai

The Kasai River (called Cassai in Angola) is a tributary of the Congo River, located in central Africa. The river begins in Angola and then serves as the border between Angola and the Democratic Republic of the Congo.

The Kasai joins the Congo at Kwamouth northeast of Kinshasa. The Kasai's tributaries include the Fimi, Kwango, and Sankuru rivers. The short stretch of the Kasai from the inflow of the Fimi to the Congo is known as the Kwah River. The Kasai basin consists mainly of equatorial rainforest areas.



1
YF 247
One piece
non padded
S-XL





SB 999



BS 2



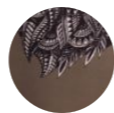
SB 32254



BS 1

YFQ 82

Dress
S-XL



A 4

YF 248

One piece
non padded
S-XL



YF 248

Kasai

The Kasai river is a tributary of Congo river and diamonds are found in this river. Around 60% of diamonds in Belgium go from Kasai river for cutting and shaping.



YF 243

Kasai

YF 243
 Triangle, non padded
 S-XLBCD



YF 240
 One piece
 non padded
 S-XL



1

2



YF 240



Kasai



YF 242
 Bandeau, cups
 S-XL



YF 241
 One piece, cups
 S-XL



YF 241



Kasai



YFQ 83
Top
S-XL



-  SB 999
-  BS 2
-  SB 32254
-  BS 1

YF 246
High-neck Halter
S-XL



-  1
-  2



YF 246

Kasai



YF 245
 Triangle, double face
 S-XL

YF 244
 Push-up, gel cups, double face slip
 S-XLB, S-LC



YF 244B
 Push-up, gel cups, double face, brasilian
 S-XLB, S-LC



1

2



YF 244



YF 254

Zaan

The Zaan (Dutch pronunciation: [za:n]) is a small river in the province of North Holland in the northwestern Netherlands and the name of a district through which it runs.

The river was originally a side arm of the IJ bay and travels 10 kilometers through the municipalities of Zaanstad and Wormerland north of Amsterdam, from West-Knollendam in the north to Zaandam in the south, where it empties into the IJ.

The river runs past the Zaanse Schans, a village with historic windmills and houses. It is one of the most popular tourist attractions in the Netherlands.

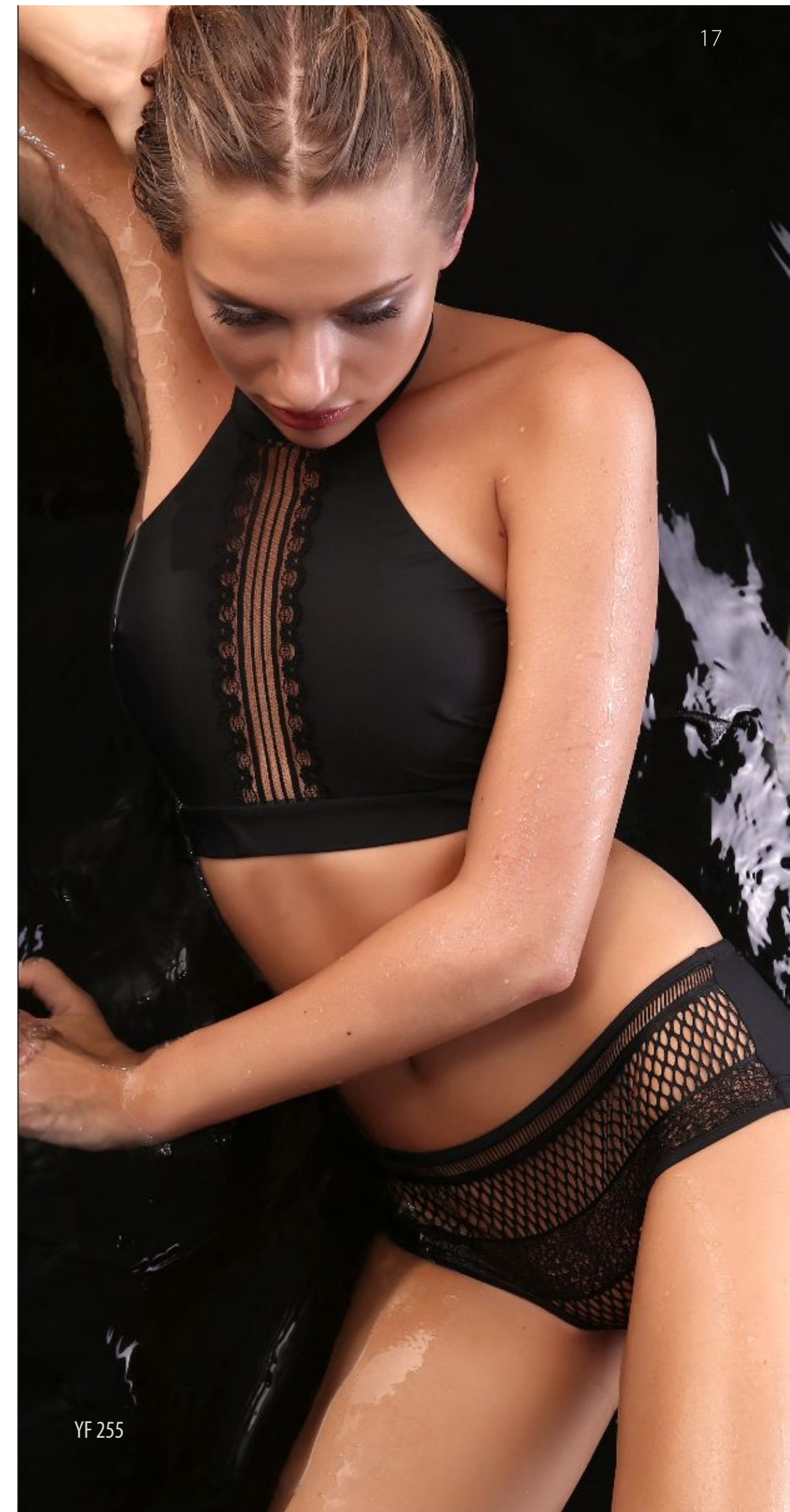
YF 255
High-neck top
S-XL



YF 254
One piece,
non padded
S-XL



E1



YF 255

Zaan



YFQ 91
Top
S-XL



YF 256
Bandeau, cups
S-XL



YF 257
Cups, removable pads
S-XLBCDEF





YF 253

Zaan



YF 253
 One piece, cups
 S-XLBC



YFQ 90
 Dress
 S-XL





YF 229

One piece, cups
S-XL



1

2

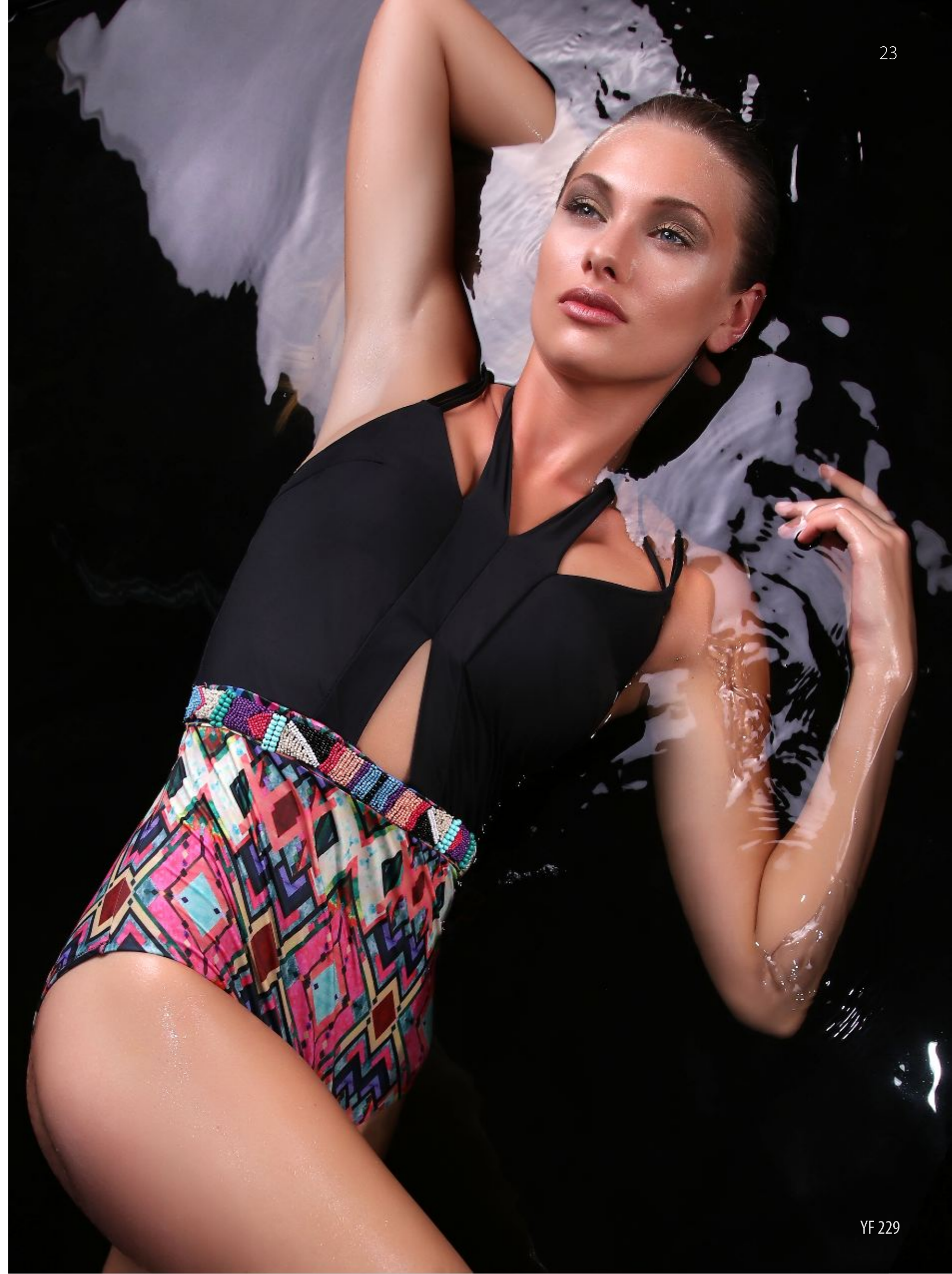


Mira

The Mira River is a river of South America, located between Ecuador and Colombia.

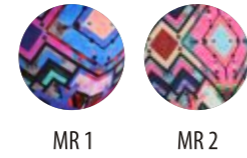
The northwest Mira delta shore is a wave-dominated environment characterized by narrow, erosive barrier islands backed by mangrove and transitional swamps.

Northeastern barrier islands and sandy intertidal shoals and bars migrate continuously to the southwestern part of Tumaco Bay. These features represent the least stable shores of the entire Pacific coast.



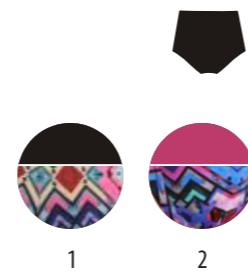


YFQ 87
 Kaftan
 one size



Mira

YF 230
 Bandeau, cups
 S-XL

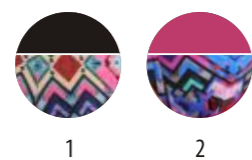


YF 230

Mira



YF 232
 Halter top, non padded
 S-XL



1

2

YF 233
 Bandeau, cups
 S-XL





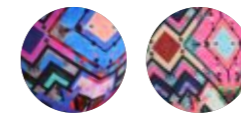
YF 231

Mira



YFQ 86

Trousers
S-XL



MR 1

MR 2

YF 231

Cups, removable pads
S-XLBC, S-XXLD, S-XLEF



1

2



Lake Sils (German Silsersee) is a lake in the Upper Engadine valley, Grisons, Switzerland.

It takes its name from the village of Sils im Engadin. The lake lies at an altitude of 1,797 metres above sea level, between Maloja Pass and Lake Silvaplana. Several mountains over 3,000 metres overlook the lake, notably Piz Corvatsch, Piz Grevasalvas and Piz da la Margna. The lake's drainage basin culminates at Piz Fora (3,336 m) and comprises the Vadrec da Fedoz glacier.

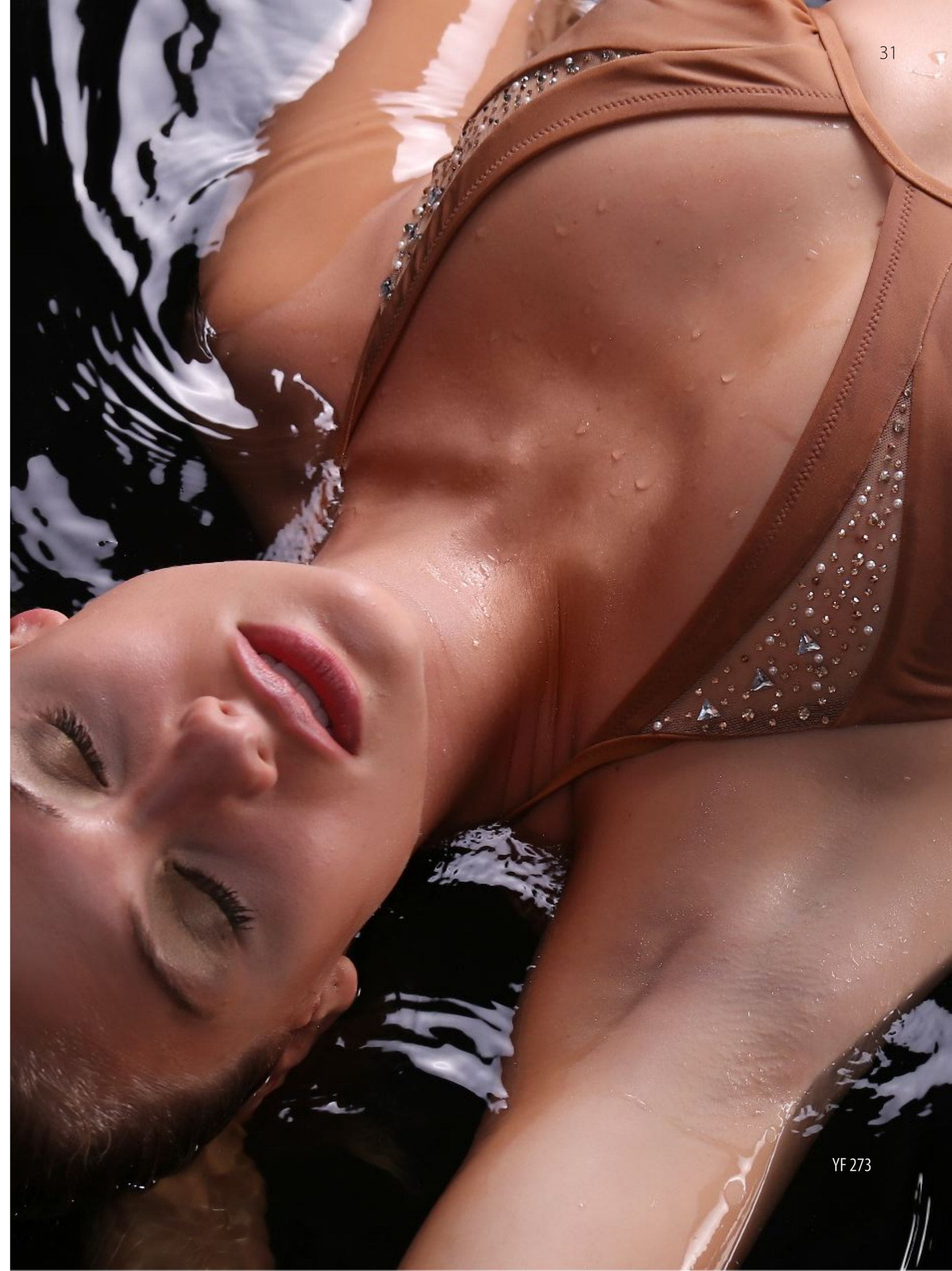
Lake Sils

YF 273

Triangle, non padded
S-XL



1 2



Lake Sils



YFQ 100

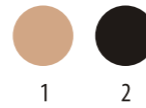
Dress
S-XL



VBI VVD VNR V299

YF 272

One piece
S-XL



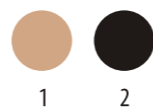
1 2





YF 274

YF 274 
 Bandeau, cups
 S-XL



Lake Sils

YFQ 101
 Top
 S-XL





Lys

The Lys (French) or Leie (Dutch and German) is a river in France and Belgium, and a left tributary of the Scheldt. Its source is in Pas-de-Calais, France, and it flows into the river Scheldt in Ghent, Belgium. Its total length is 202 kilometres.

YFQ 84

Top
S-XL



R13



R14

YF 235

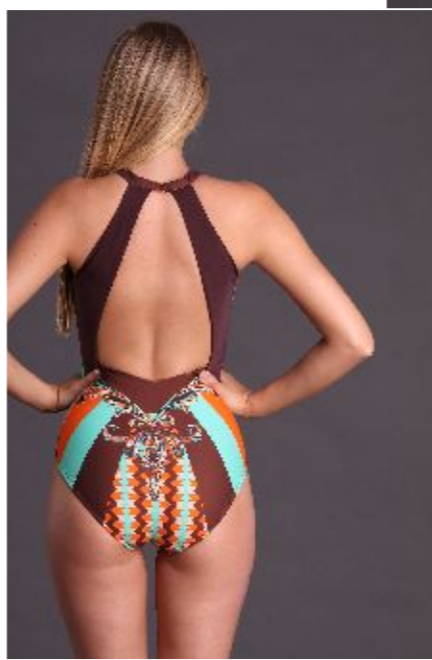
One piece, non padded
S-XL



1



2



YF 235

YFQ 85



YF 234



Lys

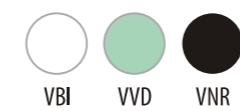


YFQ 94

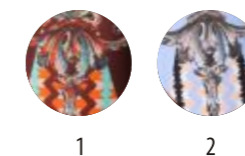


YF 237

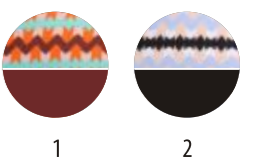
YFQ 94
Dress
S-XL



YF 234
One piece, non padded
S-XL



YF 237
Triangle, removable pads
S-XL



YF 237L
Triangle, removable pads, adjustable slip
S-XL





YFQ 95

Lys

Historically, the Lys valley was known for the spinning and weaving of flax.

The region of the Leie (between Deinze and Ghent) was as a favourite place for numerous painters in the first half of the 20th century.

YFQ 95

Skirt
S-XL



YF 236

Bandeau, cups
removable pads
S-XLBCDE, S-LF



1

2



YF 236



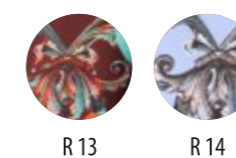
YF 238

Lys

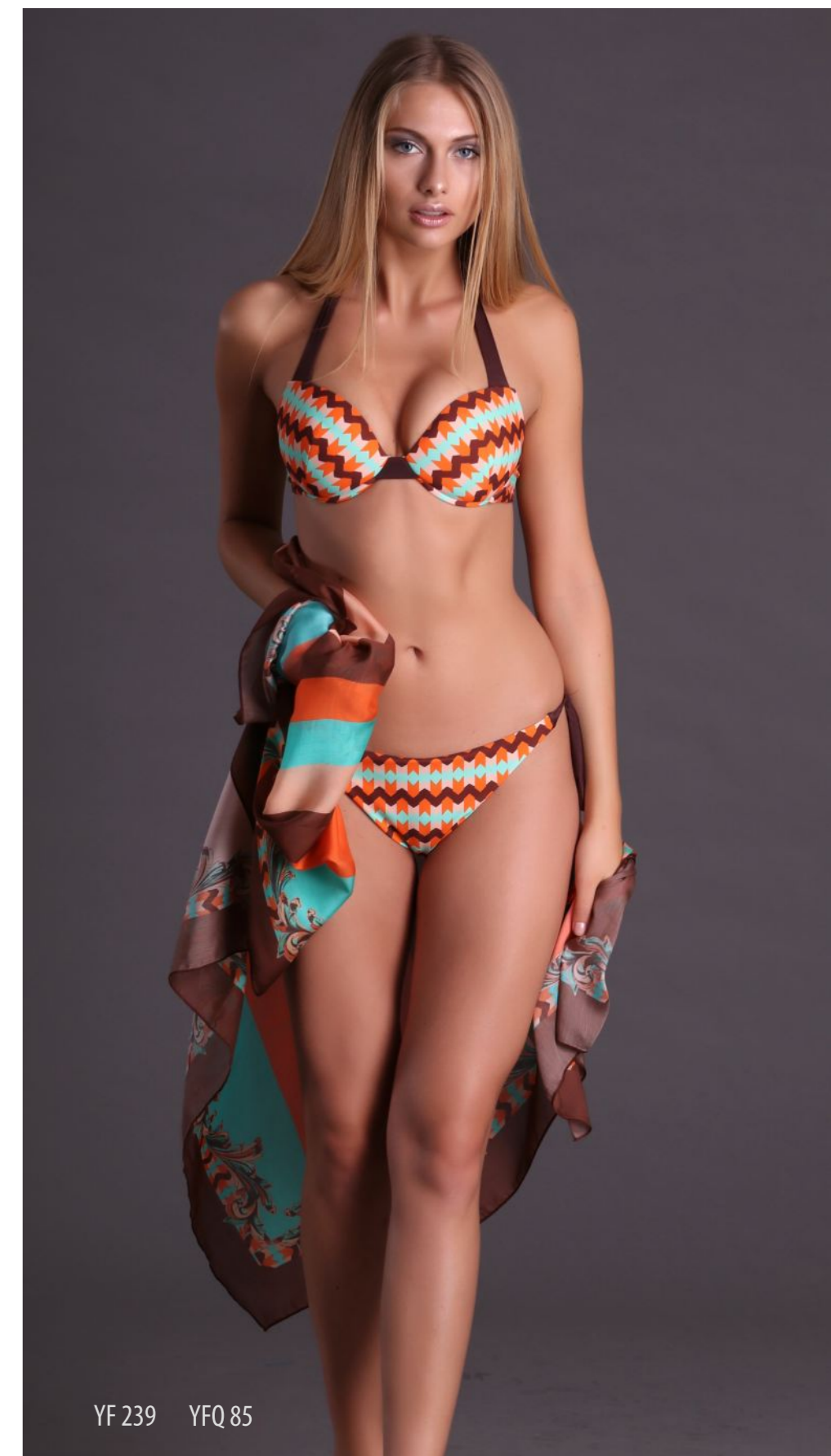
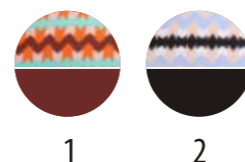
YF 239
 Push-up, cups,
 removable pads
 S-XLBC



YFQ 85
 Pareo
 one size



YF 238
 Bandeau, cups
 removable pads
 S-XLBCDE, S-LF

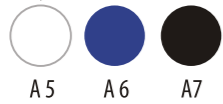


YF 239 YFQ 85



YFQ 92

Top
S-XL



YFQ 102

Kaftan
one size



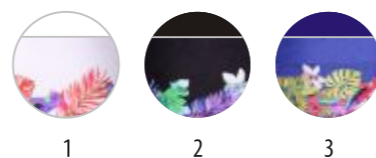
Tamarindo

Tamarindo River is a river in the Guanacaste Province of Costa Rica.

The river spans 1,200 acres and serves as the natural border between Tamarindo and Playa Grande. The estuary is home to much wildlife, including ospreys, herons and kingfishers in addition to howler monkeys and coatimundis. In particular, it hosts the American Crocodile, which draws tourists to the estuary. The river estuary is a popular place for surfing despite the local caiman population.

YF 227

One piece, cups
S-XLBC

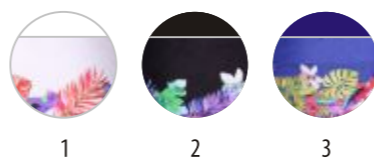


YF 227

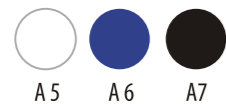


Tamarindo

YF 226
One piece,
S-XL



YFQ 93
Dress
S-XL



YF 226


Tamarindo




YF 224



YF 225

Bandeau, removable pads
S-XL 

YF 222

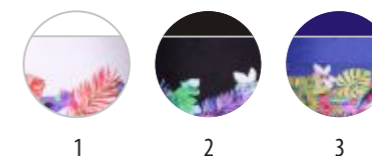
Underwire
S-3XLB, S-2XLCD, S-XLE, S-LF 

YF 224

Triangle, cups
S-XL 

YF 224B

Triangle, cups, brasilian
S-XL 



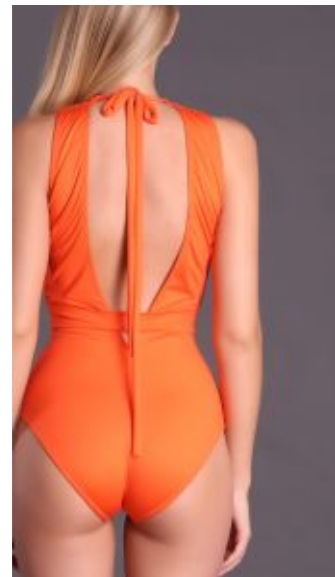
YF 223

Push-up, removable pads
S-XLBC 

Krios

Krios (Greek: Κρίος) is a stream in Achaea, southern Greece.

Its source is on mount Chelmos, near the village Perithori. It flows near the ancient city of Felloi and the villages Sinevro, Oasi, Kasaneva and the Mycenaean acropolis of ancient Aigeira. The stream empties into the Gulf of Corinth near Aigeira.



YF 258

One piece
non padded
S-XL



TZF TTR TMS TNR



Krios



YFQ 88
 Dress
 S-XL

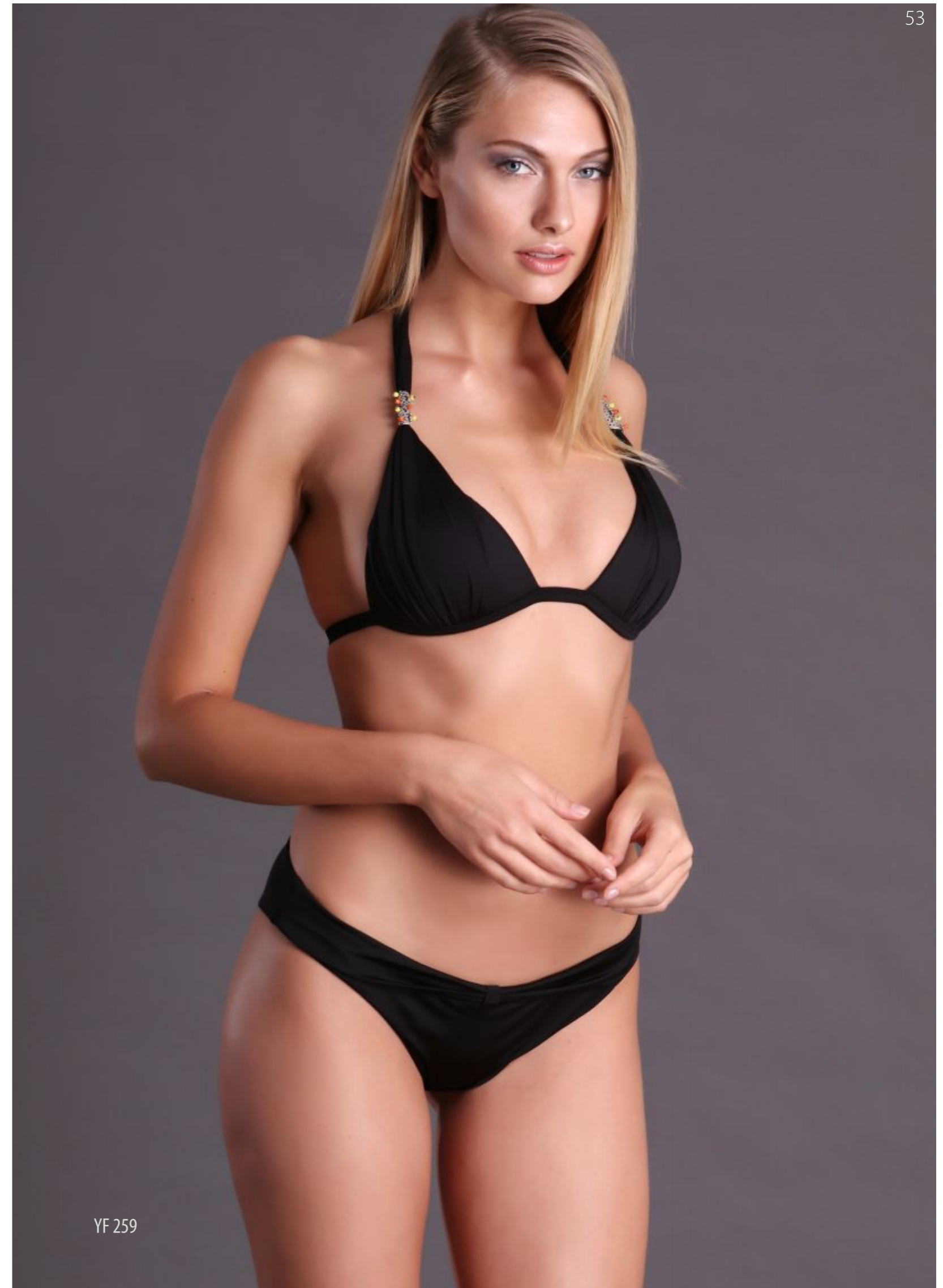
- SB 32251
- SB 999
- SBTMS
- SBTTR

YFQ 88

YF 259
 Triangle, cups
 S-XL



- TZF
- TTR
- TMS
- TNR



YF 259



YF 261



Krios

YFQ 89

Trousers
S-XL



SB 32251 SB 999 SBTMS SBTR

YF 260

Cups, removable pads
S-XLBC, S-XXLD, S-XLEF



TZF TTR TMS TNR

YF 261

Bandeau, cups
S-XL



TZF TTR TMS TNR



YF 262



One piece
non padded
S-XL



Onyx

The Onyx River is an Antarctic meltwater stream which flows westward through the Wright Valley from Wright Lower Glacier and Lake Brownworth at the foot of the glacier to Lake Vanda, during the few months of the Antarctic summer. Despite being only 32 kilometres in length it is the longest river in Antarctica



YF 262

Onyx



YFQ 96
Dress
S-XL



YFQ 97
Dress
S-XL




YF 264
Bandeau, non padded
S-XL



Onyx



YFQ 98

YFQ 98 
 Top
 S-XL

 
 VVD VNR



YF 263

YF 263 
 Triangle, non padded
 S-XLBCD 

 
 BNR BHO



YF 265

YF 265 
 Cups, removable pads
 S-XLBC 

 
 BNR BHO

YF 265B
 Cups, removable pads
 brasilian, S-XLBC 

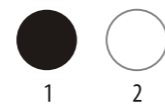


Aragón

The Aragón (Spanish: Río Aragón; Basque: Aragon Ibaia) is a river in northern Spain, one of the left-hand tributaries of the river Ebro. It rises at Astún in the central Pyrenees Mountains, passes southwest through Jaca and Sangüesa (Navarre), and joins the Ebro at Milagro (Navarre), near Tudela.

The name Aragón is related to the birth area of the former kingdom, which corresponds to the modern autonomous community of Aragón in Spain.

YF 249
One piece, cups
S-XLBC





YF 250

YF 250
 Tankini, cups
 S-XLBC



1

2

Aragón

YF 252
 Push-up, gradual cups
 S-XLB, S-LC



1

2



YF 252



YFQ 103

YFQ 103

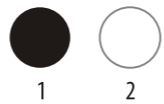
Skirt
S-XL



Aragón

YF 251

Bandeau, cups
S-XL



YF 251



YF 269

Gaià

The Gaià is a river in Tarragona Province, Catalonia.

Its source is at Santa Coloma de Queralt in the Catalan Central Depression, gathering the waters of the Serra de Brufaganya and Serra de Queralt mountain ranges. It flows through deep gorges across the Catalan Pre-Coastal Range and then close to Santes Creus. Finally it flows into the Mediterranean at the Tamarit Castle, Tarragonès, forming a coastal lagoon separated from the sea by a sandbar.

YF 269

One piece
non padded
S-XL



G299



G036



YF 269



YF 271

Gaià

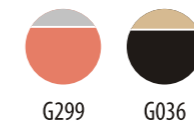


YF 270

YF 270
 Cups, removable pads
 S-XLBC, S-XXLD, S-XLEF



YF 271
 One piece, cups
 S-XLBC



G299

G036

Gaià



YFQ 99

YFQ 99

Kaftan
one size



VNR

G299

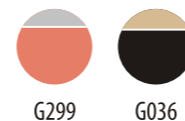
YF 268

Bandeau, non padded
S-XL



YF 268L

Bandeau, non padded
adjustable slip
S-XL



G299

G036



YF 268



YF 266

One piece
S-XL



BNR



BHO



Akan

Akan River (阿寒川 Akan-gawa) is a river in Hokkaidō, Japan.

The Akan River rises from Lake Akan, 420 metres (1,380 ft) above sea level. The lake formed when the Akan River was dammed by an eruption of Mount Oakan some 6000 years ago. The river exits the lake at Takiguchi as a waterfall.



YF 266

YF222 - pg. 48	YF249 - pg. 62, 63	YFQ81 - pg. 2
YF223 - pg. 49	YF250 - pg. 64	YFQ82 - pg. 4
YF224 - pg. 49	YF251 - pg. 67	YFQ83 - pg. 12
YF224B - pg. 49	YF252 - pg. 65	YFQ84 - pg. 36
YF225 - pg. 49	YF253 - pg. 20, 21	YFQ85 - pg. 37, 43
YF226 - pg. 47	YF254 - pg. 16	YFQ86 - pg. 29
YF227 - pg. 45	YF255 - pg. 17	YFQ87 - pg. 24
YF229 - pg. 22, 23	YF256 - pg. 18	YFQ88 - pg. 52
YF230 - pg. 25	YF257 - pg. 19	YFQ89 - pg. 55
YF231 - pg. 28	YF258 - pg. 50, 51	YFQ90 - pg. 21
YF231D - pg. 28	YF259 - pg. 53	YFQ91 - pg. 18
YF232 - pg. 26	YF260 - pg. 55	YFQ92 - pg. 44
YF233 - pg. 27	YF260D - pg. 55	YFQ93 - pg. 46
YF234 - pg. 38	YF261 - pg. 54	YFQ94 - pg. 39
YF235 - pg. 37	YF262 - pg. 56	YFQ95 - pg. 40
YF236 - pg. 41	YF263 - pg. 61	YFQ96 - pg. 58
YF237 - pg. 39	YF264 - pg. 59	YFQ97 - pg. 58
YF237L - pg. 39	YF265 - pg. 61	YFQ98 - pg. 60
YF238 - pg. 42	YF265B - pg. 61	YFQ99 - pg. 72
YF239 - pg. 43	YF266 - pg. 74, 75	YFQ100 - pg. 32
YF240 - pg. 7	YF268 - pg. 73	YFQ101 - pg. 35
YF241 - pg. 9, 11	YF268 - pg. 73	YFQ102 - pg. 44
YF242 - pg. 110	YF269 - pg. 68, 69	YFQ103 - pg. 66
YF243 - pg. 6	YF270 - pg. 71	
YF244 - pg. 14, 15	YF270D - pg. 71	
YF244B - pg. 14, 15	YF271 - pg. 70	
YF245 - pg. 14	YF272 - pg. 33	
YF246 - pg. 13	YF273 - pg. 30, 31	
YF247 - pg. 3	YF274 - pg. 34	
YF248 - pg. 5		

PRELUDE

MILANO